

'Just Talk to Us'



TABLE OF CONTENTS

Introduction to Syspor	1
Our Products	2
Synthetic Running Track	3 - 5
Artificial Turf System	6 - 11
Acrylic Surfaces System	12 - 13
Indoor PU Surfaces System	14 - 15
Jogging & Playground Surfaces System	16 - 17
Squash Court	18 - 19
Project Profiles by Numbers	20



INTRODUCTION TO SYSPOR



Corporate's Brief Statement

Being in the market for almost 30 years, SYSPOR offers a wide range and variety of sport flooring products for its clients whether it be standard or custom-made design. We have it all. You name it

Choosing the right system and supplier matters, as it will have a major impact on the surface's performance and long-term durability for years to come. Play the long game – trust, reliability and confidence are crucial considerations in making the right choice. Today, we serve clients throughout the South East Asia region, with Malaysia, Thailand, Indonesia and Philippines being our biggest markets

Poised to spearhead as one of key players in Malaysia, we actively establish strategic alliances domestically and abroad, encouraging the infusion of innovative technology with top-notch global leaders in the industry which the products have been meticulously developed and stringently tested to meet international standards

As to update ourselves with industry's current issue arises from time to time, we consistently in talk with world sport governing bodies i.e. IAAF, FIFA, FIH, FIBA, WSF, etc – and get it participated in the respective forum

Above all, with three decades of technical experiences and proven track records – needless to say that we are more than capable to endeavour any nation's sport facilities development with pride



Sport Governing Bodies



OUR PRODUCTS



Product Variations

1 SYNTHETIC RUNNING TRACK

- Full PU System (Sprint EX)
- Sandwich System (Sprint SW)
- Spray Coat System (Sprint EC)

SPRINT

2 ARTIFICIAL TURF SYSTEM

- Football & Futsal Turf
- Rugby Turf
- Hockey Turf
- Lawn Bowls Turf
- Landscape Turf

ASTROTURF
HATKO
BELLINTURF
PROMASTER

3 ACRYLIC SURFACES SYSTEM

- Multipurpose, Futsal, Tennis, Badminton, Basketball, etc

REBOUNCE ACE
GAMEKOTE

4 POLYURETHANE (PU) SURFACES SYSTEM – Indoor Only

- Multipurpose, Futsal, Badminton, etc

CASALI
CHAMPION

5 JOGGING & PLAYGROUND SURFACES SYSTEM

- Jogging Track & Playground Flooring

SAFESCAPE

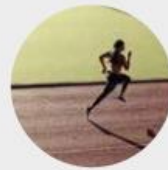
6 SQUASH COURT

- Squash Court

COURTTECH



SYNTHETIC RUNNING TRACK



SYNTHETIC RUNNING TRACK



Product Overviews



SPRINT EX

15.5mm thick system, Solid PU system, Top surface granulated, Water impermeable, Spike-resistant, Commonly used for Olympic / Commonwealth Games



SPRINT SW

13.7mm thick system, Sandwich-type of 10mm thick SBR mixed with binder and 3.7mm thick of PU broadcasted with EPDM, Water impermeable, Spike-resistant, Commonly used for SEA Games and domestic tournament



SPRINT EC

14mm thick system, Sprayed-coated surface structure, Water permeable, Spike-resistant, Commonly used for amateur athletic



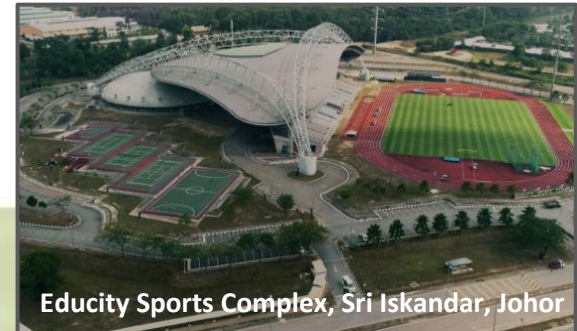
SYNTHETIC RUNNING TRACK



Project Profiles – By Sprint SW

- Stadium Darulmakmur, Kuantan, Pahang (for SUKMA 2012)
- Stadium Bandaraya, Pulau Pinang
- Kompleks Sukan MPSP, Bukit Mertajam, Pulau Pinang
- Kompleks Sukan TUDM, Sendayan, N.Sembilan
- Kompleks Sukan Beluran, Sandakan, Sabah
- Kompleks Sukan Educity, Iskandar, Johor
- Kompleks Sukan Kulai, Johor
- Kompleks Sukan Penawar, Kota Tinggi, Johor
- Kompleks Sukan Pulai, Johor
- Universiti Pertahanan Nasional Malaysia, Kuala Lumpur
- Universiti Islam Antarabangsa, Kuantan, Pahang
- Universiti Multimedia, Cyberjaya, Selangor
- Kolej Matrikulasi Selangor, Banting, Selangor
- SMK Bukit Nenas, Setiu, Terengganu
- Sekolah Menengah Sains Semberong, Johor
- and the list goes on

LOCAL PROJECTS



Educity Sports Complex, Sri Iskandar, Johor



Darulmakmur Stadium, Kuantan, Pahang
(SUKMA 2012)



Bandar Penawar Sports Complex, Johor



TUDM Sports Complex, Sendayan



Bandaraya Stadium, Penang

SYNTHETIC RUNNING TRACK



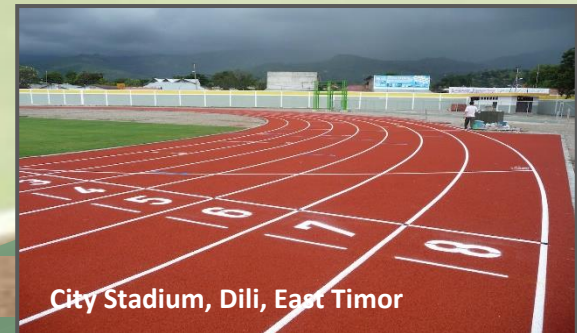
Project Profiles – By Sprint SW

OVERSEAS PROJECTS

- Walailak University, Thailand
- City Stadium, Dili, East Timor
- SUTD University, Singapore
- Khatib Army Base, Ministry of Defence, Singapore
- Crest Secondary School, Singapore
- Seng Kang Primary School, Singapore
- Jayapura Stadium, Papua, Indonesia
- Megalan Sports Complex, Indonesia
- University of Northern Philippines, Vigan City, Philippines
- Marikina Sports Complex, Philippines
- Aklan Sports Complex, Philippines
- Tagaytay City Sports Complex, Philippines
- La Salle Green Hills School, Manila, Philippines



Marikina Sports Complex



City Stadium, Dili, East Timor



Walailak University, Thailand



Aklan Sports Complex



Khatib Army Base, Ministry of Defence,
Singapore

ARTIFICIAL TURF SYSTEM



ARTIFICIAL TURF SYSTEM



The Strategic Alliances

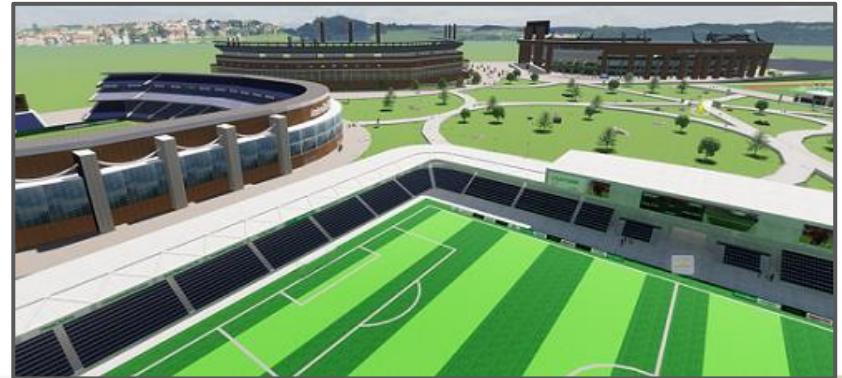
In order to equip with a state-of-art technologies of sport flooring particularly in artificial turf system, we have established a strategic alliances abroad to adapt the innovative design from top-notch global leaders in the industry such as:-

- **ASTROTURF** of Germany
- **HATKO** of Turkey
- **PROMASTER** of Australia
- **BELLINTURF** of China

Commonly used for football, hockey, rugby, futsal, tennis, lawn bowls, landscape, etc

Key Benefits of Artificial Turf System:-

- Obvious Aesthetics
- Impressive Warranties
- Quality Manufacturing & Environmental Benefits
- Cost-effective Start-up
- Low Maintenance - Short and Long Terms
- Increase Performance of the Players
- Safe Condition for Children to Play, etc



ARTIFICIAL TURF SYSTEM



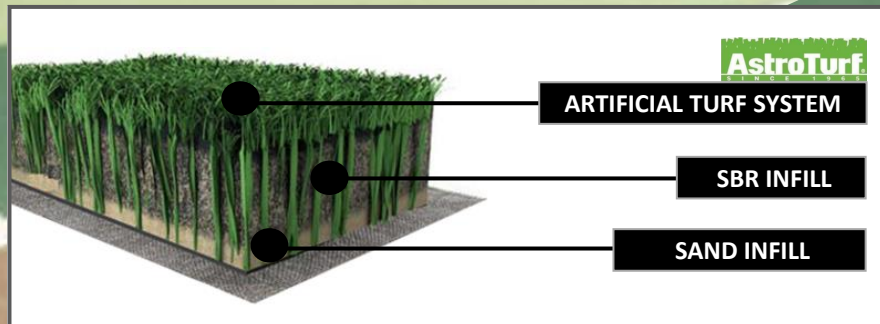
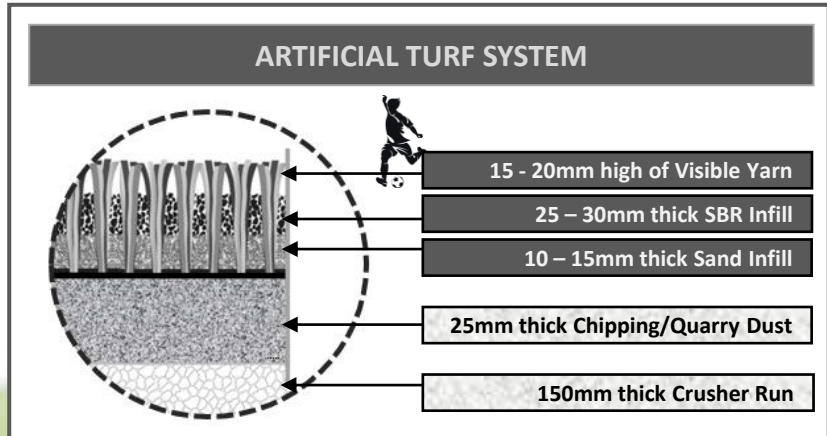
Product Overview

FOOTBALL / RUGBY / FUTSAL

Nowadays, the demand for football field installed with artificial turf systems have been very overwhelming. This is simply due to its 'robust' characteristic – sustainability factors for short and long run and represent the most profitable business model in sport industries

In general, there are two types of artificial turf system, namely **Infill System** and **Non-Infill System**

Infill System consists of Stabilising Infill i.e. Silica Sand, as well as Performance Infill i.e. SBR Granules, whereas **Non-Infill System** is equipped with frizzy fibers as to ensure the yarn will always stand up and also the prefabricated SBR shockpad is laid for the whole field



ARTIFICIAL TURF SYSTEM



Product Overview

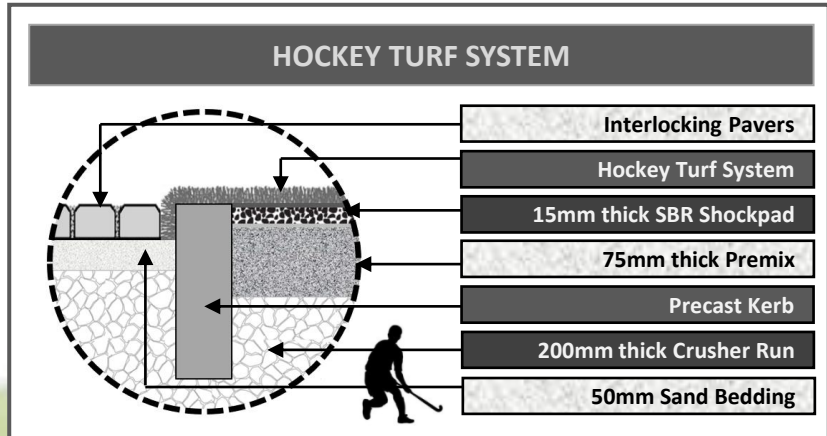
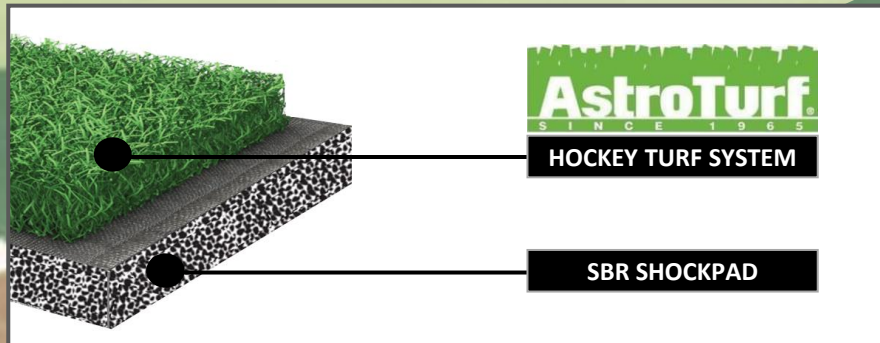
HOCKEY

The most expensive facility to build – and not surprisingly there are a very limited facilities nationwide despite its encouraging demand

In general, there are two types of hockey field as far as artificial turf system is concerned, as follows:-

- Sand-Dressed/Infill System (For Amateur Leisure, Training or even domestic matches)
- Non-Infill Wet System (For National & International tournaments)

All the major tournaments i.e. World Cup, are using Non-Infill System as its official fields where the surface is watered prior the game



ARTIFICIAL TURF SYSTEM



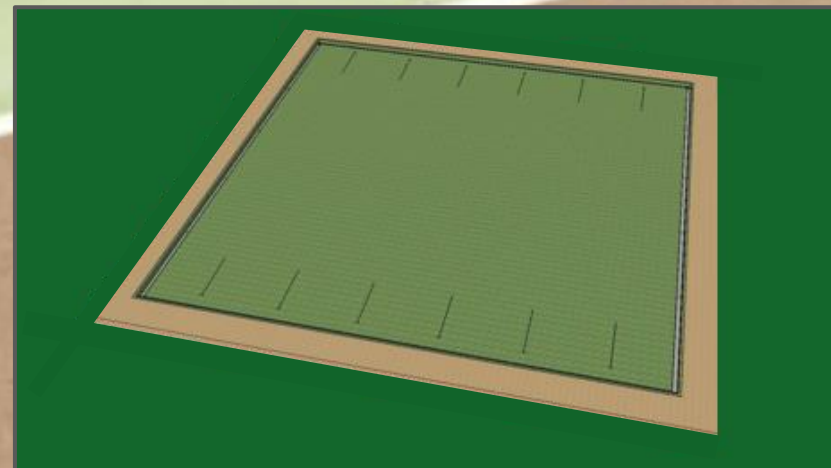
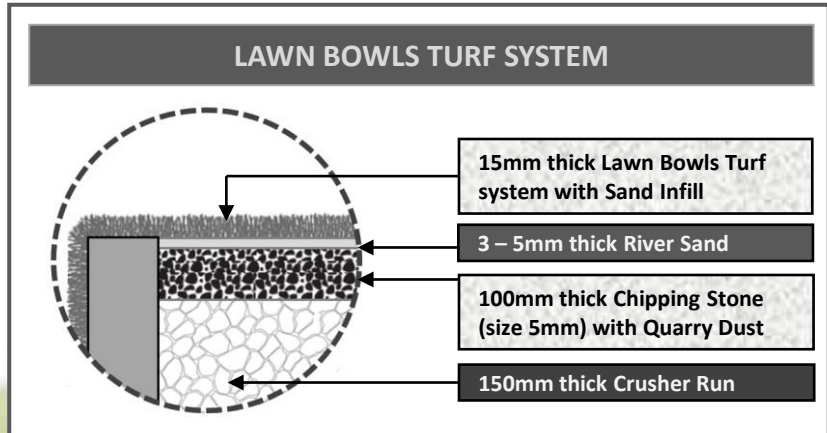
Product Overview

LAWN BOWLS

Lawn Bowls games have been gaining its own popularity for the past 10 years. This is evident by the encouraging demand especially from government agencies i.e. Ministry of Sports & Youth, public universities, etc

The uniqueness of lawn bowls games also have managed to attract a younger generation to be part in the industry

There are numerous designs of the lawn bowls system depending on the manufacturer methods and designs i.e. infill or non-infill systems. All the designs are subject to the approval from its sport governing body i.e. WORLD BOWLS



ARTIFICIAL TURF SYSTEM



Product Overview

LANDSCAPE

landscape turf is getting more and more recognition as an alternative to natural grass due to its very low maintenance and natural looks. It is available in different choices i.e. thickness, density, type of yarn, etc, of which suitable for all kind of applications such as:-

- Indoor & Outdoor Landscaping
- Children's Playground
- Garden & Golf Walkway
- Swimming Pool Surrounds
- Residential & Commercial's Balcony, etc

Key Benefits of Landscape Turf:-

- Multipurpose Product & Easy Installation
- Obvious Aesthetics
- Safe Condition for Children to Play
- Free Maintenance – No Moving, Weeding, Cutting, etc



LANDSCAPE TURF SYSTEM



ARTIFICIAL TURF SYSTEM



Project Profiles

- Majlis Perbandaran Kuantan , Pahang (Lawn Bowls)
- Kompleks Sukan Seremban, N. Sembilan (Lawn Bowls)
- Kompleks Sukan Langkawi, Kedah (Lawn Bowls)
- Kompleks Sukan Gong Badak, Terengganu (Lawn Bowls)
- Bukit Jambul Complex Soccer Club, P.Pinang (Futsal)
- SportsCity Kamunting, Perak (Futsal)
- SportCity Futsal Section 19 PJ, Selangor (Futsal)
- Score! Arena, Kuchai Lama, Kuala Lumpur (Futsal)
- The Roof Futsal Klang, Selangor (Futsal)
- Park Avenue Hotel, Sg Petani (Landscape)
- Sports Planet Sunway, Selangor (Futsal)
- 4G3 & 4G4 Administrative Buildings, Putrajaya (Landscape)
- The Ampwalk, Kuala Lumpur (Landscape)
- Kompleks Rakan Muda, Alor Gajah, Melaka (Football Turf)
- Kompleks Sukan TUDM, Sendayan, N.Sembilan (Hockey Turf)
- and the list goes on



ARTIFICIAL FOOTBALL TURF (JV with others)
Kompleks Rakan Muda, Alor Gajah



ARTIFICIAL HOCKEY TURF
Kompleks Sukan TUDM, Sendayan



FUTSAL
SportCity Futsal Section 19 PJ

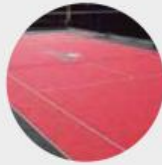


LAWN BOWLS
Kompleks Sukan Seremban



LAWN BOWLS
Kompleks Sukan Gong Badak, Terengganu

ACRYLIC SURFACES SYSTEM



ACRYLIC SURFACES SYSTEM



The Strategic Alliance

Apart from our very own in-house brand i.e. **Gamekote**, we also have a product imported from Australia - the **Rebound Ace**. This imported brand is commonly used for international tournaments such as ATP Tour

Product Overview

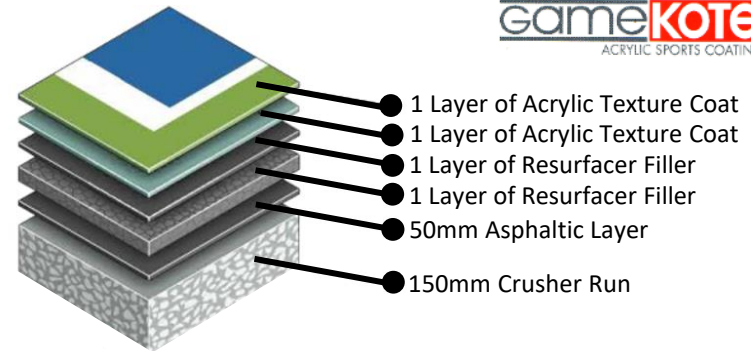
It is designed with a high concentration of acrylic binders to provide a more flexible form and ensure a higher surface durability. Best used for indoor and outdoor games court i.e. multipurpose court, futsal, badminton, tennis, netball, basketball, takraw, etc

In general, there are two types of system namely **Hard Acrylic System** and **Cushioned Acrylic System**. The former without rubberized system whereas the latter with rubberized system - to provide an absolute shock absorption and real energy restitution effects

Key Benefits of Acrylic Surfaces System:-

- Preservation Against Algae and Moss
- Slip-Resistant due to Acrylic Texture
- Robust Wearing and Long-lasting
- Excellent Durability in all Conditions, etc

ACRYLIC SURFACES SYSTEM



REBOUND ACE®



ACRYLIC SURFACES SYSTEM



Project Profiles

- Universiti Putra Malaysia (Takraw & Volleyball Court)
- Bandar Sime UEP, Selangor (Tennis Court)
- TPM Malaysia (Tennis, Volleyball, Basketball & Netball, Takraw & Courts)
- IKBN Kertih, Terengganu (Takraw, Volleyball & Netball Courts)
- Nilai Perdana, N.Sembilan (Tennis Court)
- Sekolah Menengah Seri Puteri, Cyberjaya (Tennis, Basketball & Netball Courts)
- UMT, Terengganu (Tennis & Takraw Courts)
- UiTM Merbok, Sungai Petani, Kedah (Tennis Court)
- PD World Marina Resort, Negeri Sembilan (Tennis Court)
- Universiti Malaya , Kuala Lumpur (Tennis & Basketball Courts)
- Kolej Y. Saad, Selangor (Tennis, Takraw, Volleyball, Netball & Basketball Courts)
- Lanai Kiara Condominium, Kuala Lumpur (Tennis Court)
- Concorde Inn Hotel, Selangor (Tennis)
- Perdana View Condominium, Selangor (Tennis)
- Kolej Tunku Abdul Rahman, Kuala Lumpur (Volleyball Court)
- and the list goes on



POLYURETHANE (PU) SURFACES SYSTEM



INDOOR PU SURFACES SYSTEM



The Strategic Alliance

Our success stories on our in-house PU flooring system **Champion** brand, have led top-notch global sport manufacturer i.e. **Casali Sports** of Italy, resorted to team up with us for Polyurethane (PU) flooring system marketing efforts for South East Asia region

Product Overview

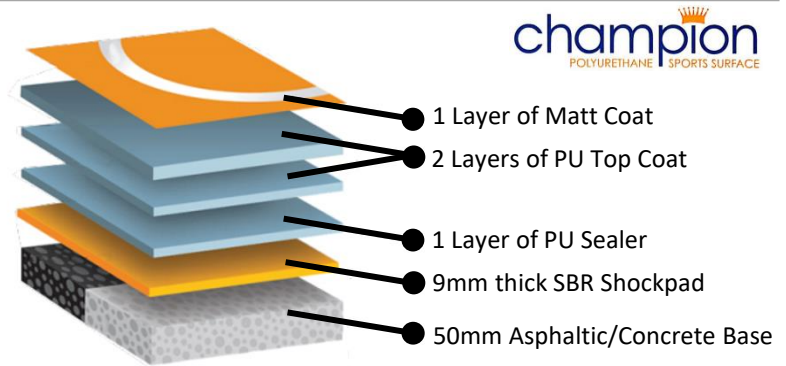
PU flooring system has been the choice of flooring for many indoor sport facilities and commonly used for multipurpose court, futsal, badminton, basketball, badminton, takraw, volleyball, etc

Also regarded as a perfect alternative i.e. cushioning properties thus minimize the risk of sport-related injuries , as compared to other hard flooring systems

Key Benefits of Polyurethane (PU) Surfaces System:-

- Absolute Shock Absorption Effects
- Seamless Flooring from Wall to Wall
- Easy to Repair and 'Re-paint' the Different Color
- Water Impermeable / Non-porous System
- Real Energy Restitution Effects, etc

POLYURETHANE (PU) SURFACES SYSTEM



CASALI
SPORT



INDOOR PU SURFACES SYSTEM



Project Profiles

- Sri Andalas Sport Complex, Selangor
- A'Famosa Clubhouse, Malacca
- Maktab Perguruan Kangar, Perlis
- Kompleks Sukan & Rekreasi KEJORA, Johor
- MSN Gymnasium 3, Bukit Jalil, Kuala Lumpur
- Kelab Golf Bukit Banang, Batu Pahat, Johor
- UiTM Bandar Seri Iskandar, Perak
- Central Equine Hospital, Ipoh, Perak
- Dewan Bolatampar MBSA Seksyen 4, Shah Alam, Selangor
- Sunway Lagoon Club, Bandar Sunway, Selangor
- Kompleks Sukan Iskandar, Johor
- Taman Koperasi Polis, Kuala Lumpur
- Sekolah Sukan Bukit Jalil, Kuala Lumpur
- French International School, Kuala Lumpur
- Garden International School, Kuala Lumpur
- and the list goes on



Dewan Bolatampar MBSA Seksyen 4, Shah Alam



Sekolah Sukan Bukit Jalil, Kuala Lumpur



Sekolah Kebangsaan King Edwards VII (II)
Larut Matang & Selama



Sunway Lagoon Club, Bandar Sunway



Taman Koperasi Polis, Kuala Lumpur

JOGGING & PLAYGROUND SURFACES SYSTEM



JOGGING & PLAYGROUND SURFACES



The Strategic Alliance

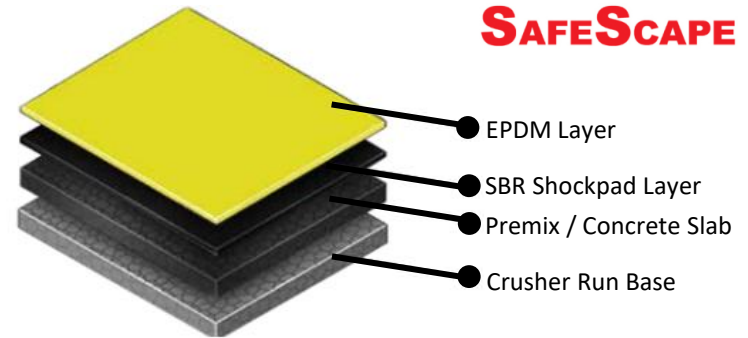
As part and parcel of expanding our current portfolio to the next level, we have been exclusively roped in by a leading local playground equipment manufacturer i.e. **UNIQUE GREEN RECREATIONAL (UGR)** to working hand-in-hand in developing the healthy flooring systems for leisure and playground compounds – so as in compliance with **Playground Safety Association of Malaysia (PSAM)** requirement – Not to mention UGR is currently pioneering a joint-effort with PSAM for ensuring the safety of the children playing at the playground compound – by way of introducing a new set of technical rules and regulations in building children's playground park



Tropicana Cheras, Kajang

JOGGING & PLAYGROUND SURFACES SYSTEM

SafeScape



Product Overview

SafeScape system is a revolutionary method in the installation of safety surfaces. It involves the laying of seamless rubberized surfaces using colourful EPDM granules and suitable for all kind of indoor and outdoor applications i.e. children's playground, jogging track or even for games court surfaces

Key Benefits of our very own **SafeScape**:-

- Children Safety Awareness is at its Best
- Seamless Flooring from Wall to Wall
- Customized Design upon Request
- Absorbing Impact upon Falling, etc

JOGGING & PLAYGROUND SURFACES



Project Profiles – The Flooring

- KLCC Park, Kuala Lumpur
- Tropicana Cheras, Kajang
- Bandar Kinrara Club House, Puchong, Selangor
- Komplek Penyayang Mak Cili, Terengganu
- Mont' Kiara International School
- Wisteria, Bandar Rimbayu
- China Embassy, Ampang, Kuala Lumpur
- Chymes @ Gurney, Kuala Lumpur
- Taman Tasik Titiwangsa, Kuala Lumpur
- Taman Bukit Jelutong, Selangor
- Taman Tasik Puchong Perdana, Selangor
- Taman Tasik Perdana Kuala Lumpur
- Taman Rimba, Kuala Lumpur
- Universiti Pendidikan Sultan Idris, Perak
- Taman Tasik Permaisuri, Cheras
- and the list goes on



SQUASH COURT SYSTEM



SQUASH COURT SYSTEM



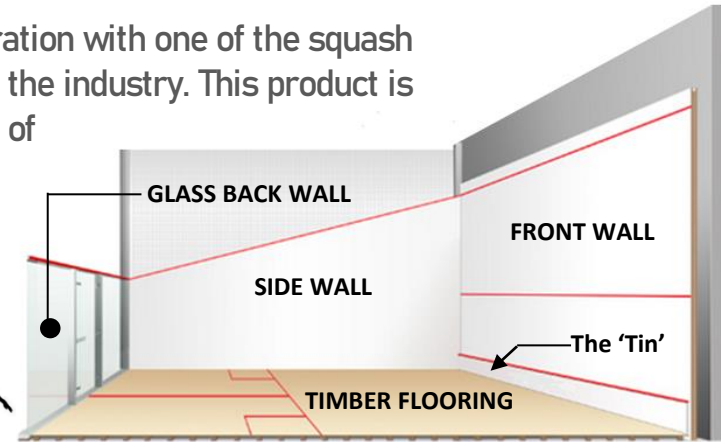
The Strategic Alliance

To provide the best services for squash facilities, we have a collaboration with one of the squash manufacturer i.e. **COURTTECH** of Germany, a leading global player in the industry. This product is normally used for national and international tournament purposes – of which require the Product Approval from WSF

As for leisure especially for amateur, we also do have a customized components i.e. tampered glass locally manufactured, using armourcoat plaster for front and side walls, normal timber flooring, etc, at the affordable costing without compromising its quality and safety



STANDARD SQUASH COURT SYSTEM



Product Overview - Basic Components of Squash Court



TAMPRED GLASS		TIN(SOUNDINGBOARD)		TIMBER FLOORING	WALL		LIGHTING	
Fin	Frame	Standard	Custom	Standard	Movable	Fix	Fluorescent	LED

SQUASH COURT SYSTEM



Project Profiles

- Rafflesia International School
- Kelab Perdana Diraja Lake Club, Kuala Lumpur
- A'Famosa Golf Resort, Melacca
- Mandarin Oriental Hotel, Kuala Lumpur
- Klang Executive Club
- Equatorial Hill Resorts, Pahang
- Kolej Matrikulasi Yayasan Saad Selangor
- Kolej Matrikulasi Selangor, Banting, Selangor
- SMK Bukit Nenas, Setiu, Terengganu
- Nilai Inti University College
- Kelab Golf SAAS, Shah Alam
- UiTM Bandar Seri Iskandar
- Maktab Perguruan Besut, Terengganu
- UiTM Merbok, Sungai Petani, Kedah
- Sunway Lagoon Club
- and the list goes on



Klang Executive Club



Sunway Lagoon Club



UiTM Bandar Seri Iskandar



Kelab Golf SAAS, Shah Alam



Rafflesia International School

PROJECT PROFILES BY NUMBERS

Completed Projects As of 2020

Synthetic Running Track	40
Artificial Turf System	52
Acrylic Surface System	178
Indoor PU Surfaces System	68
Jogging & Playground Surfaces System	61
Squash Court	106
Others i.e. Natural Turf & Equipment	16



End of Document